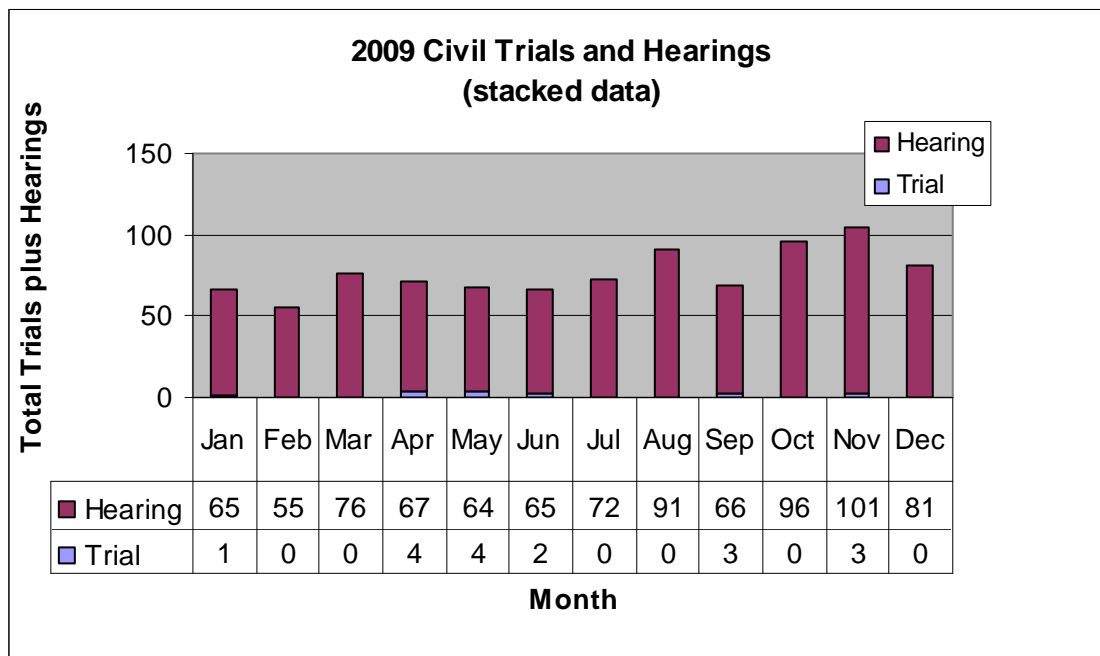


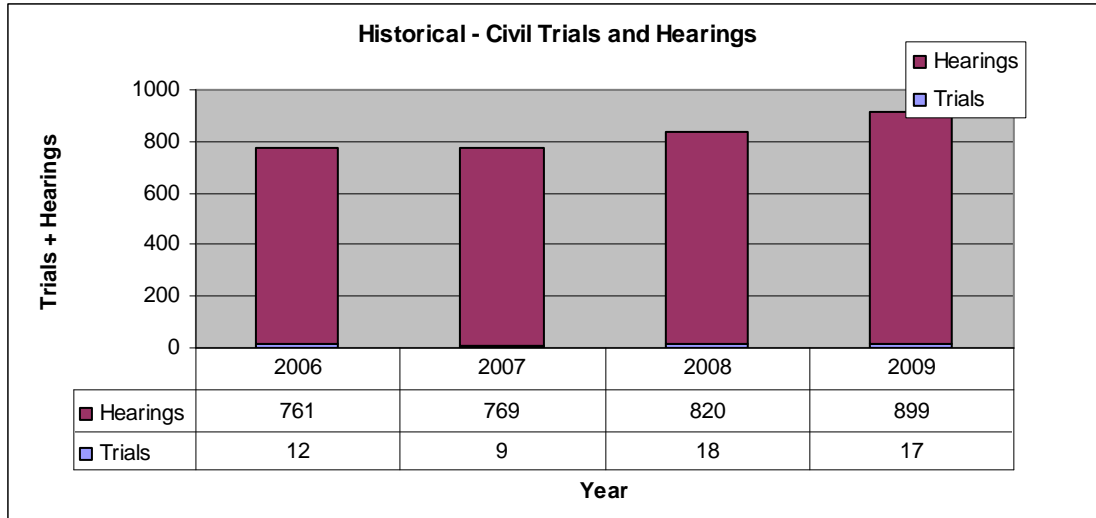
The Civil Justice System

Court of Common Pleas: Civil proceedings

Civil hearings result from legal filings that requested a hearing before a Judge. Included are Custody, Divorce, Protection from Abuse, Medical Malpractice, Equity, Name Change, License Appeals, License Registrations and Mortgage Foreclosure proceedings. In 2009, 899 civil hearings were conducted - 10% more than in 2008.

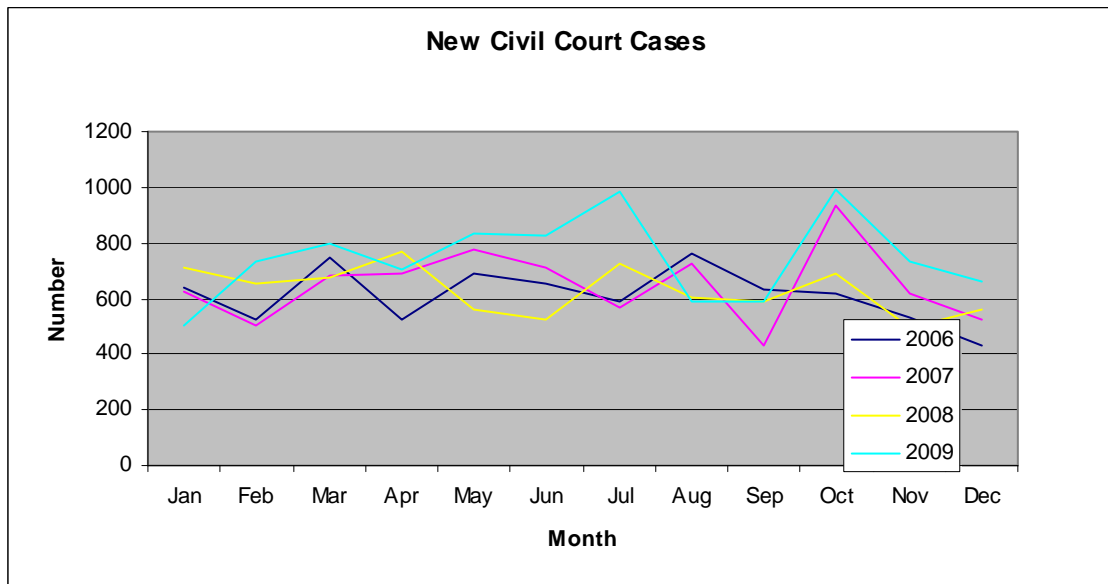
Civil Jury trials are all cases where a jury was selected regardless of the outcome of the case. Currently the court has civil jury trial weeks scheduled 5 times per year (5 one week sessions). During the breaks between trial terms, preparation for the next trial term, including the summoning of a jury panel and closing out the prior jury panel is done. In 2009, 17 civil jury trials were conducted - one less than in 2008.





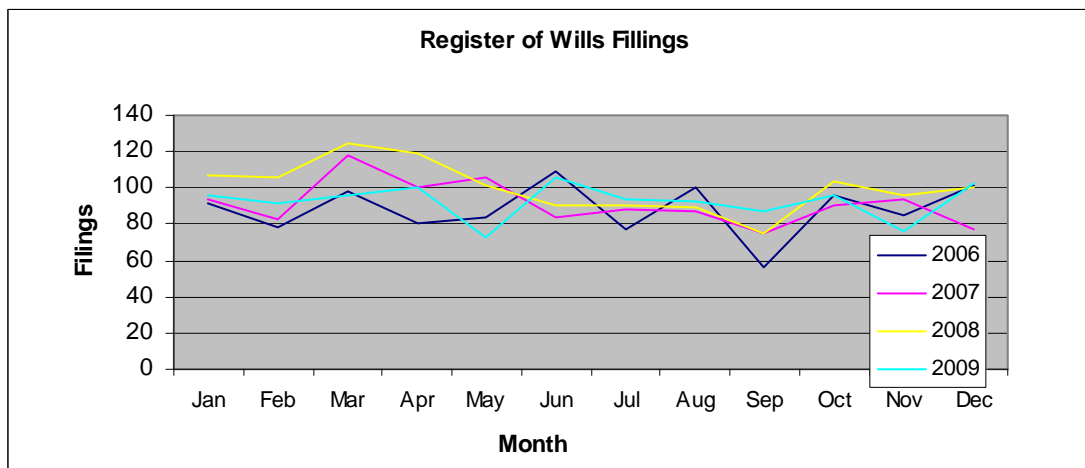
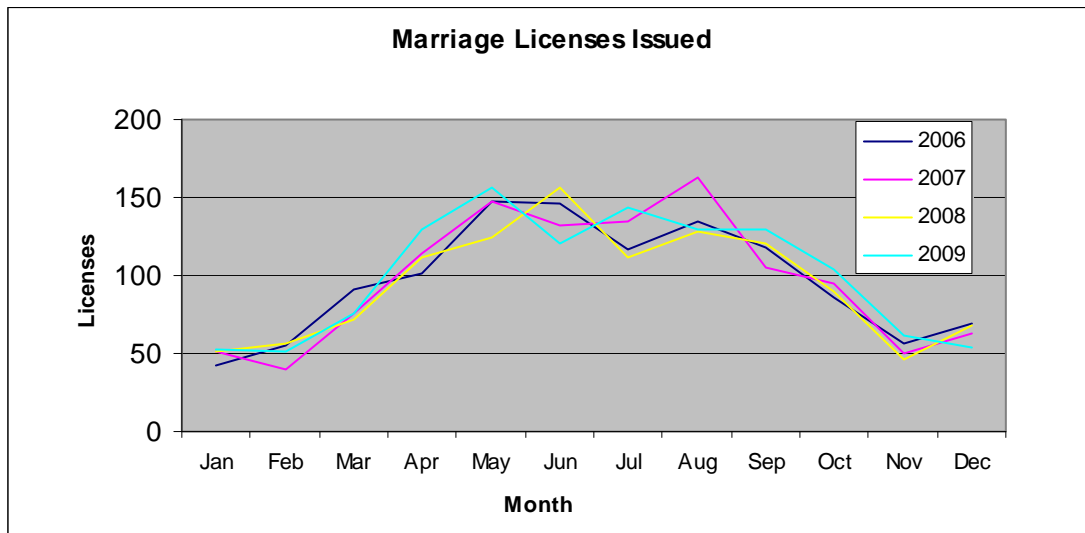
Prothonotary - Elected Official - Keeper of Civil Court records

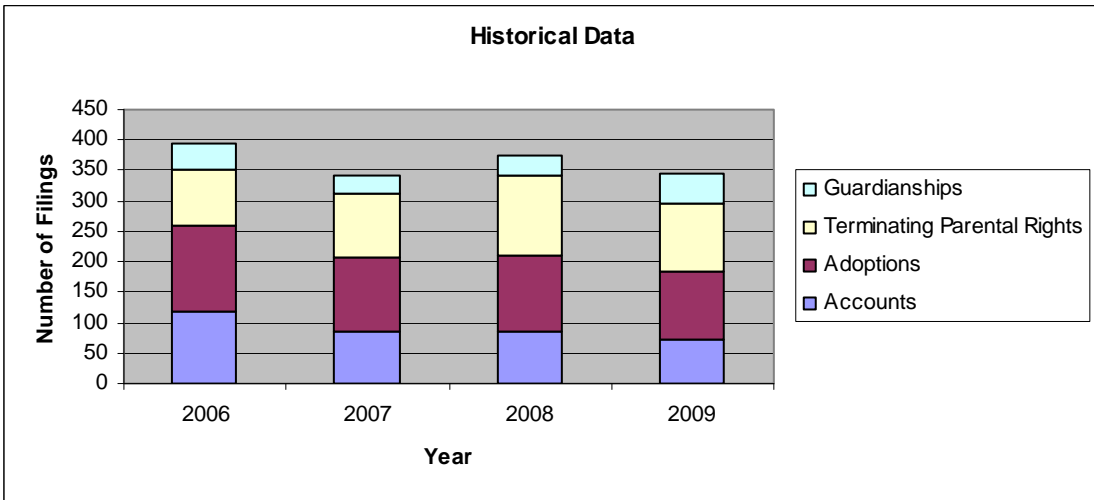
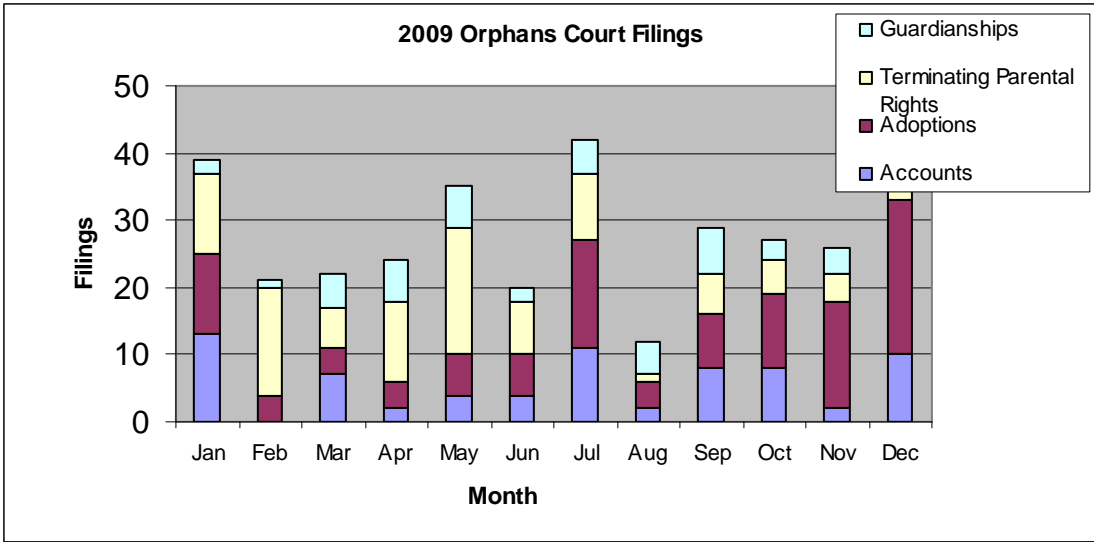
The Cumberland County Prothonotary's Office properly manages and maintains all civil court records both at the court house and online and is responsible for keeping the privacy of all sealed cases of the civil court. In addition, the office processes passports and prepares the Naturalization Court ceremony for all new United States citizens. Together, the Prothonotary, his two deputies and five clerks care for cases varying in size from 1 page to 1000 pages. In 2009, 8943 cases were filed in the Cumberland County Prothonotary's Office. This is an increase of 18% of the 7559 cases filed in 2008.



Register of Wills and Clerk of the Orphans Court - Elected Official

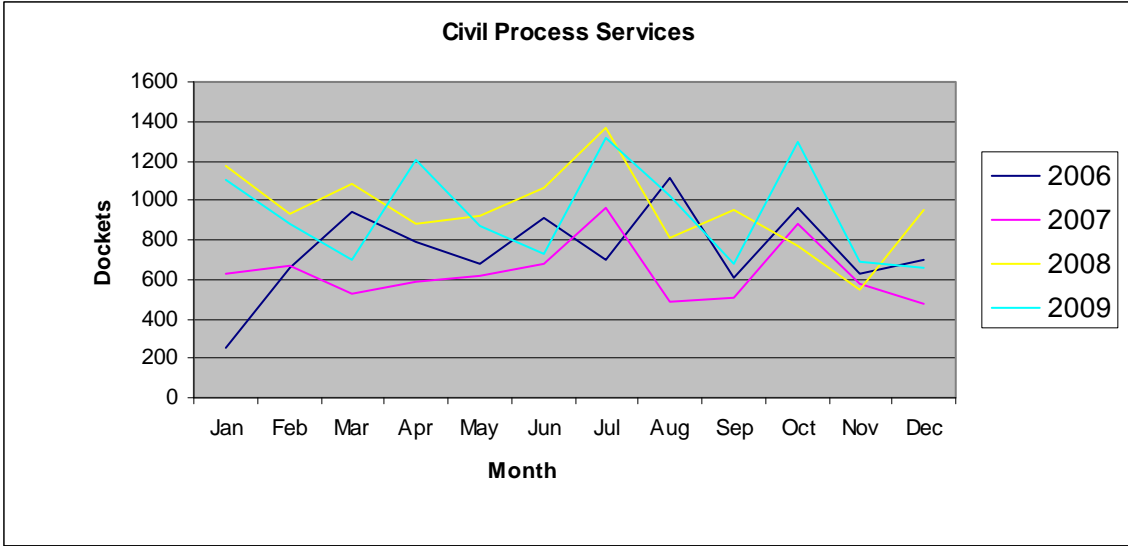
The Register of Wills processes decedents' estate documents and accepts Inheritance Tax payments for individuals who were domiciled in Cumberland County at the time of their death. The Clerk of Orphans' Court processes filings for administration accounts (estate, trust, guardian), adoptions, appeals, claims against estates, guardianships, minors' estates, small estate proceedings, trusts, as well as other miscellaneous filings. Orphans' Court division is also responsible for taking marriage applications and issuing licenses for couples who wish to be married in Pennsylvania. 1206 marriage licenses were issued in 2009.





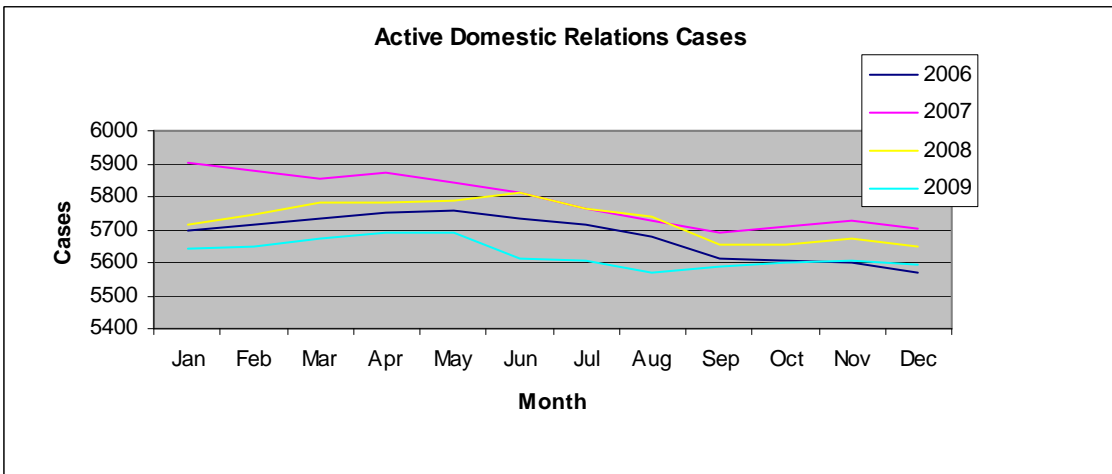
Office of the Sheriff: Support for Civil Processes

In addition to law enforcement and security responsibilities, the Office of the Sheriff receives, docketed and makes returns for litigants on numerous types of civil processes; 11,146 were processed in 2009 – about the same as in 2008, which had risen 50% over previous years. This continuing high number was largely due to the state of the economy. As the economic problems continued, more residents were unable to pay their debts, such as taxes, mortgages, credit cards, autos, loans, utilities, etc. This led to creditors filing civil law suits against residents (who then became defendants in the civil process).



Domestic Relations Office

The Domestic Relations Office establishes and enforces child support orders as well as civil paternity cases and spousal support orders. DRO is under the direction of the Cumberland County Court of Common Pleas. DRO had an average of 5,226 open support cases at any time during 2009 - a decrease of 2% from 2008.



In 2009, the DRO staff collected \$26,881,401 in child support (approximately \$2.24 million per month), which placed Cumberland County first in collections among all Class 4 Pennsylvania counties. For every \$1.00 spent by the DRO in 2009, \$9.37 was collected. This figure exceeds the statewide average of \$6.39 collected for every \$1.00 spent, and more than doubles the national average of \$4.58 collected for every \$1.00 spent.

Child Support Collected per \$1.00 Collection Cost

