

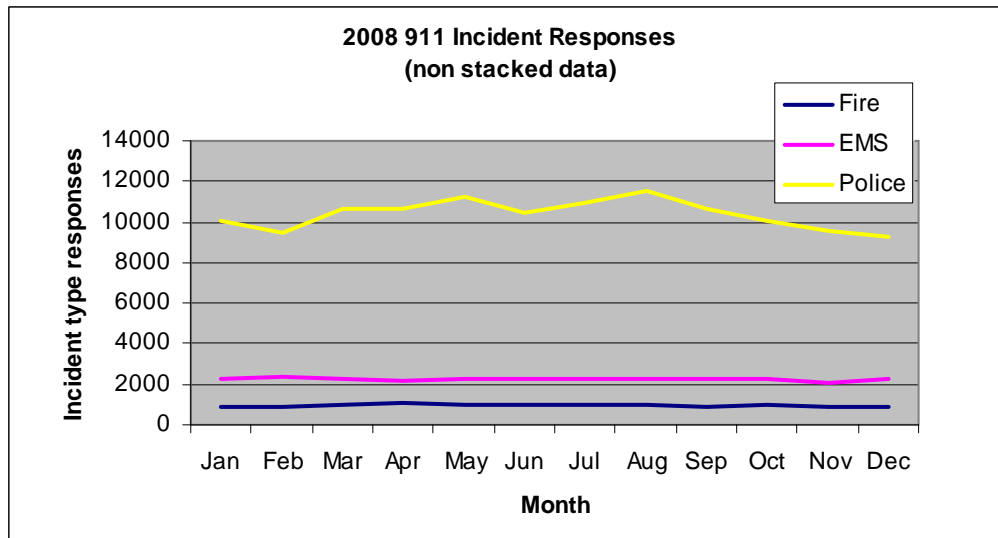
**Law and Order:** County government in Pennsylvania is a large part of the criminal and civil justice system.

## Public Safety

### Emergency Dispatch and Incident Coordination

An integral part of public safety is providing public access and emergency response. The 911 emergency telephone and public safety communications systems are fundamental to the integrity of public safety. They are activated by a telephone call to the County's emergency dispatch center. The 911 Dispatcher's words of "911 - what is your emergency?" sets in motion a series of events carefully designed to provide a rapid, efficient, appropriate and effective response to any emergency situation. In 2008, the County answered 87,214 "911" calls, down 4% from the 91,150 calls in 2007. Likewise, 2008's 338,394 non emergency calls were 9% fewer than in 2007.

The 911 Center provides dispatch and coordination services to 19 police agencies, 40 fire departments, 12 EMS agencies, and other County offices and departments in both Cumberland and Fulton County. It responded to 166,098 incidents in 2008, 3300 more than in 2007. This was a dispatch event about every 3 minutes, on the average, of every hour of every day of 2008.



2006-2008 911 Incident Responses

