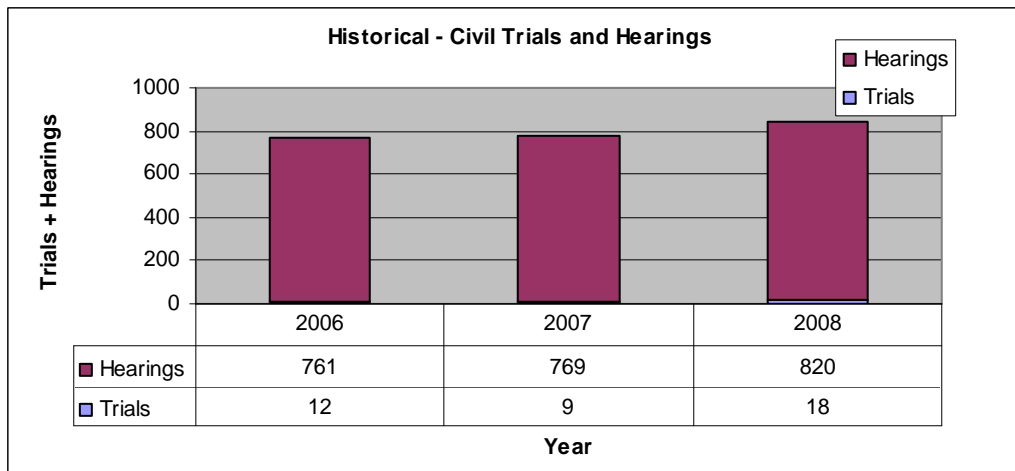
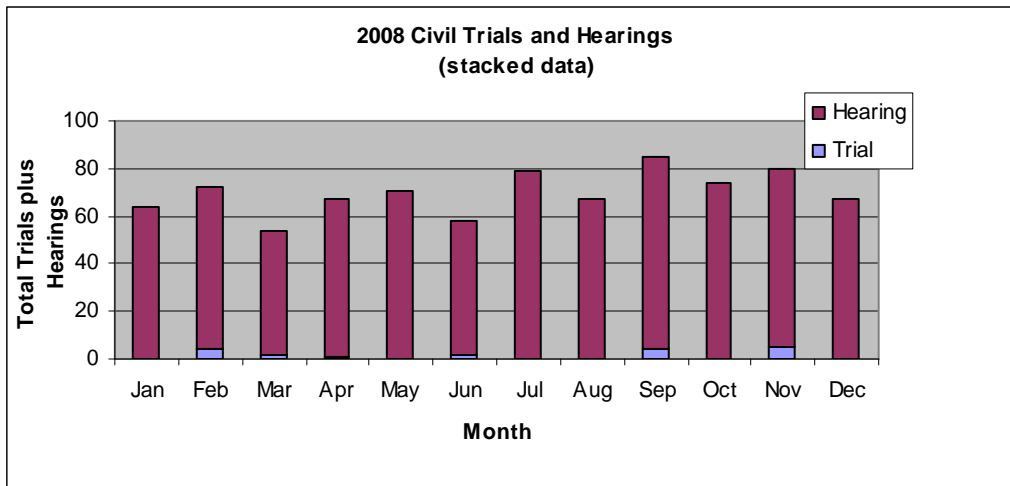


The Civil Justice System

Court of Common Pleas: Civil proceedings

Civil hearings result from legal filings that requested a hearing before a Judge. Included are Custody, Divorce, Protection from Abuse (PFA), Medical Malpractice, Equity, Name Change, License Appeals, License Registrations and Mortgage Foreclosure proceedings. In 2008, 820 civil hearings were conducted - 7% more than in 2007

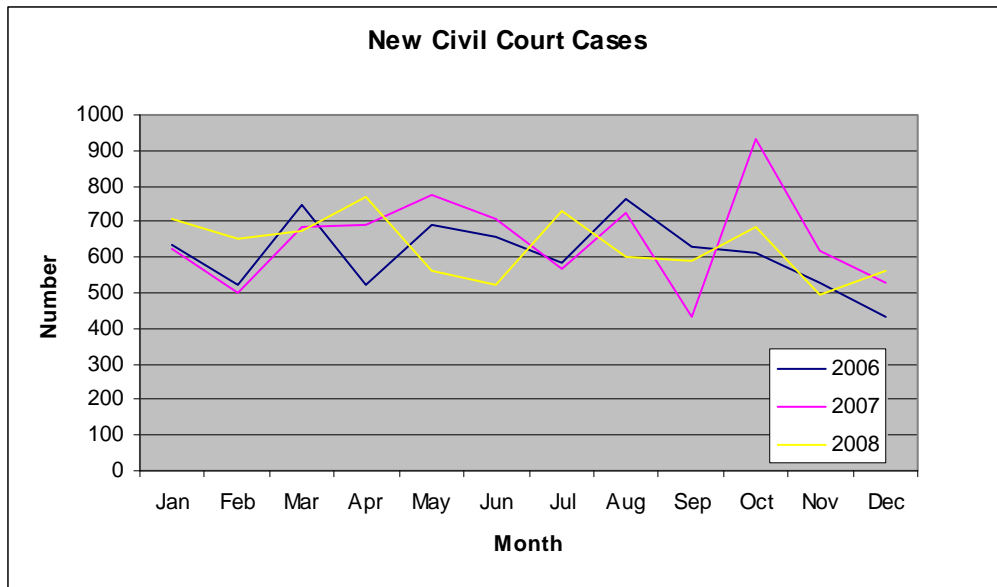
Civil Jury trials are all cases where a jury was selected regardless of the outcome of the case. Currently the court has civil jury trial weeks scheduled 5 times per year (5 one week sessions). During the breaks between trial terms, preparation for the next trial term, including the summoning of a jury panel and closing out the prior jury panel is done. In 2008, 18 civil jury trials were conducted - twice as many as in 2007.



Prothonotary - Elected Official - Keeper of Civil Court records

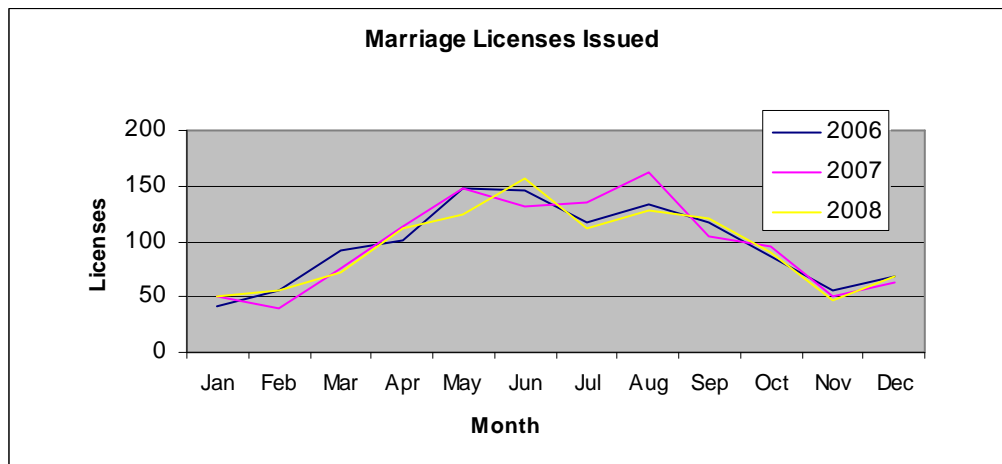
The Prothonotary has administrative control and responsibility for keeping and maintaining all official documents and records. All civil litigation is filed with the

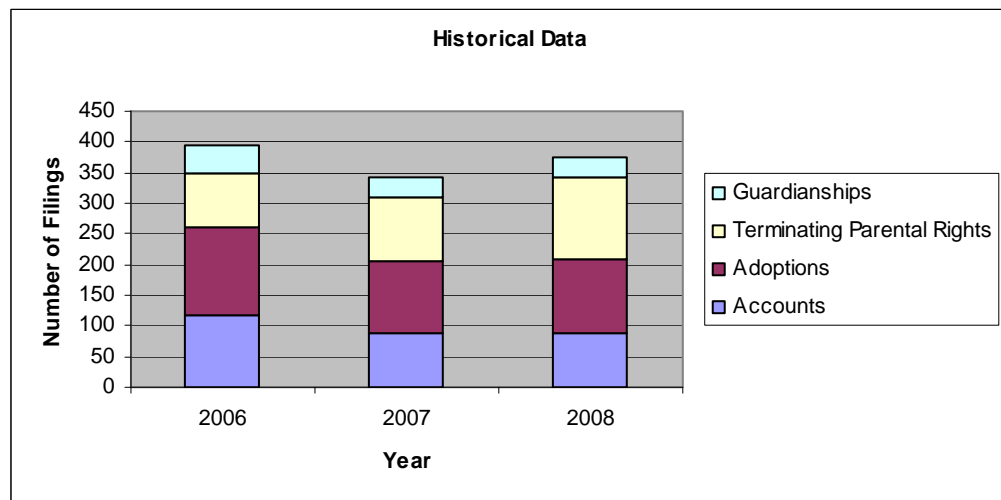
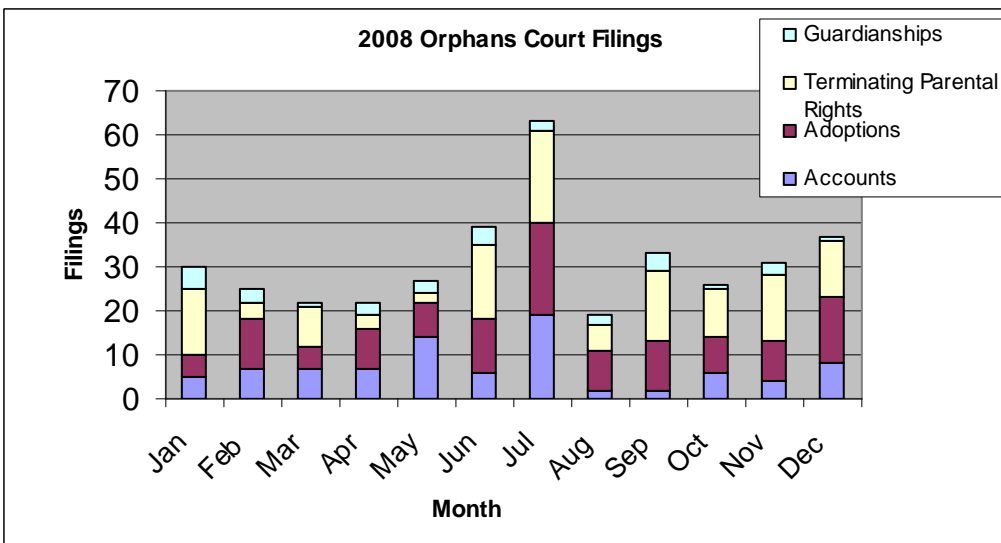
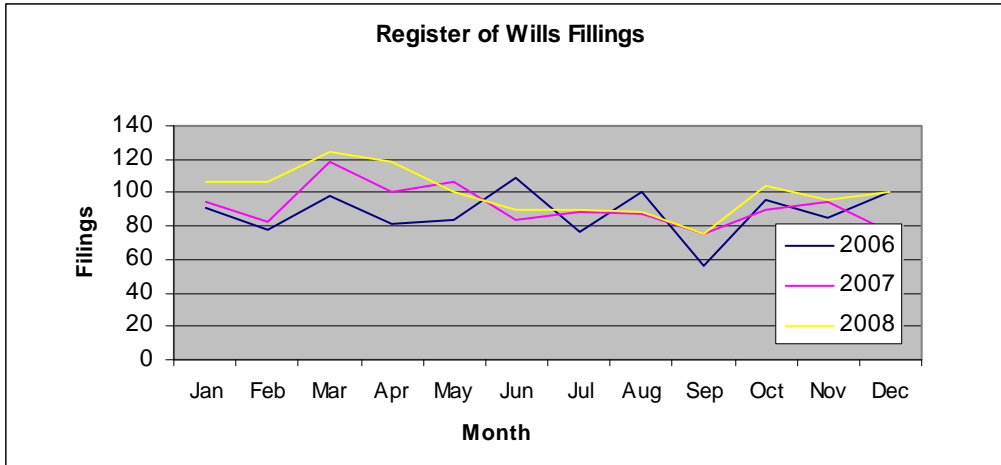
Prothonotary. In the chart below, an individual case may contain anywhere from ten to over a thousand pages. The 7,559 cases filed in 2008 were 3% below the 7,785 cases filed in 2007.



Register of Wills and Clerk of the Orphans Court - Elected Official

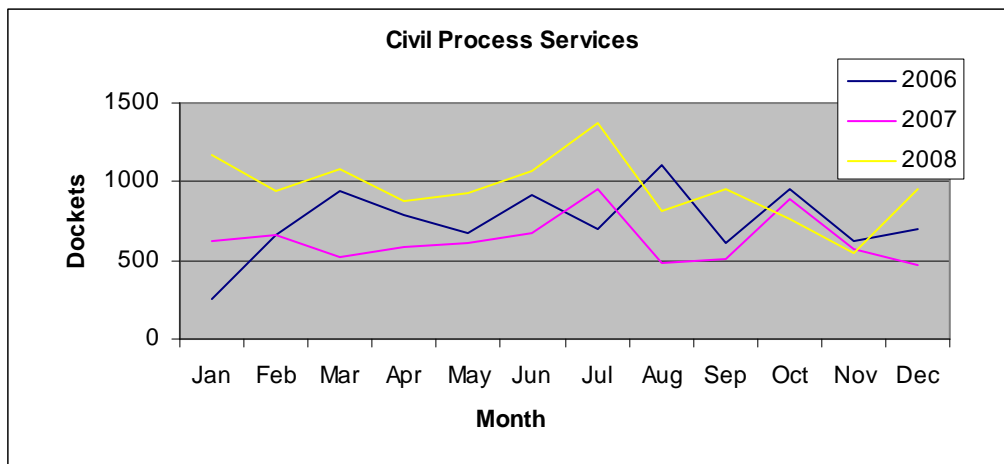
The Register of Wills processes decedents' estate documents and accepts Inheritance Tax payments for individuals who were domiciled in Cumberland County at the time of their death. The Clerk of Orphans' Court processes filings for administration accounts (estate, trust, guardian), adoptions, appeals, claims against estates, guardianships, minors' estates, small estate proceedings, trusts, wrongful death actions, as well as sundry other miscellaneous filings. Orphans' Court division is also responsible for taking marriage applications and issuing licenses for couples who wish to be married in Pennsylvania. 1134 marriage licenses were issued in 2008.





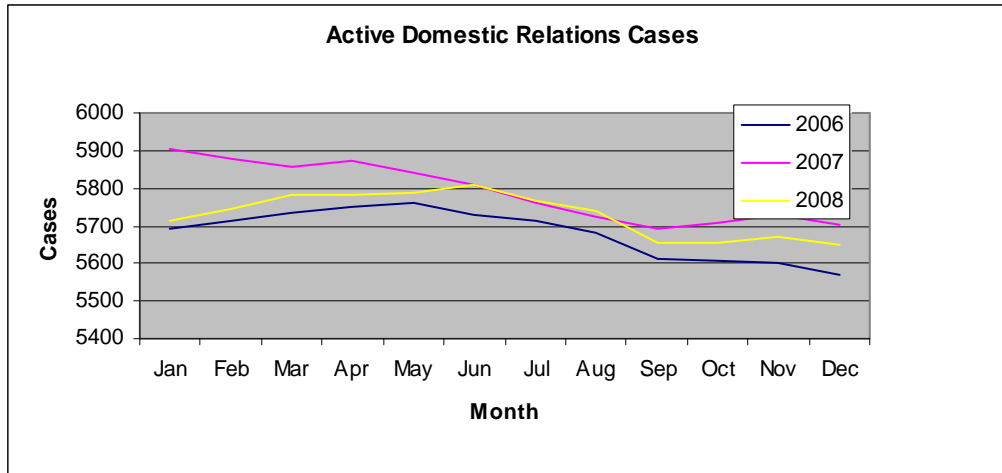
Office of the Sheriff: Support for Civil Processes

In addition to law enforcement and security responsibilities, the Office of the Sheriff receives, docketed and makes returns for litigants on numerous types of civil processes; 11,461 were processed in 2008 – a 51% increase over the 7590 processed in 2007. This increase was largely due to the state of the economy. As the economy worsened, more residents were unable to pay their debts, such as taxes, mortgages, credit cards, auto loans, utilities, etc. This led to creditors filing civil law suits against residents (who then became defendants in the civil process). A sharp decline in the number of civil processes for 2008 occurred towards the end of November. This was due to a Federal moratorium that went into effect from approximately November 29, 2008 through January 9, 2009. The moratorium put a stay, or a hold, on any foreclosure actions that had a loan insured by Fannie Mae or Freddie Mac.



Domestic Relations Office

The Domestic Relations Office establishes and enforces child support orders as well as civil paternity cases and spousal support orders. DRO is under the direction of the Cumberland County Court of Common Pleas. DRO had an average of 5,730 open support cases at any time during 2008 - a decrease of 60 or 1% from 2007.



In 2008, the DRO staff collected \$27,246,376 in child support (approximately \$2.27 million per month), which placed Cumberland County first in collections among all Class 4 Pennsylvania counties. For every \$1.00 spent by the DRO in 2006, \$9.80 was collected. This figure exceeds the statewide average of \$6.39 collected for every \$1.00 spent, and more than doubles the national average of \$4.58 collected for every \$1.00 spent.

